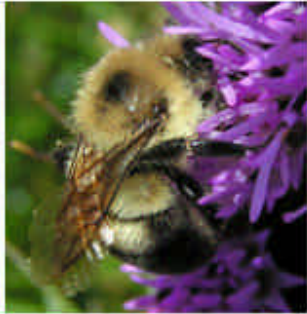


# NYC Bee Watcher Bee Categories

## Bumble bees (*Bombus*)

Large, fuzzy, yellow and black bees. There are several different species that you can distinguish by their banding pattern. Females carry pollen on their back leg. Males won't have pollen.



## Honey bees

Can be golden or dark brown; hairy eyes



Above - Honey bee on the left and bumble bee on the right

## Green Metallic Bees

Included in this category are Halictid or sweat bees that are all green, bees that have green heads and black abdomens, and bees with green heads and striped abdomens.



## Carpenter bees (*Xylocopa*)

Huge bees with shiny black abdomen; no stripes



A lot of bees fit into the 'other bee' category!

### Other Bees

This includes any bees you observe that don't fit into the other four categories. Some common 'other bees' are shown below.



Female leaf-cutter bee  
Pollen carried under the abdomen, not on legs



Wool Carder Bee



Giant Resin Bee  
Introduced species;  
1/2 - 1 inch long;  
longer and more cylindrical than carpenter bee



Melissodes Bee  
(Above and below)  
Very long antennae



Do not count flies, wasps or other insects that may land on your flower and look like a bee

### What Looks Like a Bee... But Isn't?

Wasps aren't hairy like bees and have a narrow "waist." They may be yellow and black (yellow jackets) or black, red, or metallic blue.



Flies are chunky and robust. They fly very fast and have large eyes and only one pair of wings. They may be yellow/black or metallic green or blue.

